

The UCI logo consists of a small flag with horizontal stripes of blue, yellow, red, and green, followed by the letters "UCI" in a bold, black, sans-serif font.

**XCO
C2**

TESSUTI SPORT BIKE RACE



**16.5.
2026**

Dlouhoňovice, CZE

TECHNICAL GUIDE

TESSUTI SPORT BIKE RACE UCI C2 XCO 16TH MAY 2026

LOCATION: MOUNTAINBIKE AND SKI AREA DLOUHOŇOVICE
POD VLEKEM 162, 56401 DLOUHOŇOVICE
GPS: 50.0670133N, 16.4366514E

RACE OFFICE: MARKED BUILDING IN THE AREA AS REGISTRATION/ INFO
GPS: 50.0672386N, 16.4364503E

DOPING: MARKED BUILDING IN THE AREA
GPS: 50.0672386N, 16.4364503E

TEAM MANAGERS MEETING: FRIDAY AT 6:00 PM IN THE BUILDING MARKED REGISTRATION/INFO
GPS: 50.0672386N, 16.4364503E

ORGANIZER: SK ŽAMBERK, Z.S. , LUKAVICE 31, 561 51 LUKAVICE, IČO 44473966

MORE INFORMATION CAN BE FOUND AT WWW.TESSUTI-TEAM.CZ
FOLLOW US WITH INSTAGRAM PROFILE @TESSUTI-TEAM
OR OUR FACEBOOK PROFILE @TESSUTI-TEAM

TEAM AREA/ PARKING RESERVATION: PLEASE BOOK HERE: BIKERACE@TESSUTI-TEAM.CZ

ORGANIZER, CONTACT:

RACE MANAGER: JAROSLAV CABALKA
PHONE: +420 607 228 988
E-MAIL: BIKERACE@TESSUTI-TEAM.CZ

COURSE DIRECTOR: MARTIN DOLEČEK
PHONE: +420 732 839 170
E-MAIL: INFO@TESSUTI-TEAM.CZ

RACE SECRETARY: ALEŠ ZEZULKA
E-MAIL: INFO@TESSUTI-TEAM.CZ

WEBSITE OF THE RACE: WWW.TESSUTI-TEAM.CZ/
INSTAGRAM @TESSUTI-TEAM
FACEBOOK @TESSUTI-TEAM

HEALTH SERVICE: ČERVENÝ KŘÍŽ ÚSTÍ NAD ORLICÍ

NEAREST HOSPITAL: ORLICKOÚSTECKÁ NEMOCNICE
ČS. ARMÁDY 1076, 562 18 ÚSTÍ NAD ORLICÍ
PHONE: (+420) 465 710 111
GPS: 49.970462 N, 16.401814 E

NEAREST AIRPORT: LETIŠTĚ PARDUBICE
PRAŽSKÁ 179, POPKOVICE, 530 06 PARDUBICE
GPS: 50°0'48" S. Š., 15°44'19" V. D.



REGISTRATION:

**ONLINE REGISTRATION IS POSSIBLE NO LATER THAN THURSDAY,
MAY 14 2026 AT 20:00 (APPLICATION VALID AFTER PAYMENT).**

ON-SITE REGISTRATION IS POSSIBLE: - NO EXTRA CHARGE FOR CHILDREN'S CATEGORIES

- WITH A SURCHARGE OF 100% OF THE ENTRY FEE FOR REST OF CATEGORIES

REGISTRATION - REGISTRATION FOR THE RACE ONLINE ON THE WEBSITE

[HTTPS://WWW.TESSUTI-TEAM.CZ/BIKERACE-PRIHLASKA](https://www.tessuti-team.cz/bikerace-prihlaska)

ALL RACE COMPETITORS RIDE AT THEIR OWN RISK AND RESPONSIBILITY.

THE ORGANIZER BEARS NO RESPONSIBILITY ASIST FORCAUSED MATERIAL OR HEALTH DAMAGE CAUSED BEFORE THE RACE, DURING TRAINING OR DURING THE RACE ITSELF.

ALL COMPETITORS AGREE TO THIS AND CONFIRM THEIR AGREEMENT ON THE REGISTRATION FOR THE RACE.

ENTRY FEE:

CHILDREN´S SCOOTERS	FREE
BOYS AND GIRLS U7+U9	FREE
BOYS AND GIRLS U11	200 CZK
BOYS AND GIRLS U13+U15	200 CZK
BOYS AND GIRLS U17	300 CZK
JUNIORS MEN AND WOMEN	400 CZK
ELITE MEN AND WOMEN	500 CZK
MEN A, B, C, D	400 CZK

PRESENCE: AT THE VENUE OF THE RACE, AT THE LATEST SEE SCHEDULE

● 1 HOUR BEFORE THE START OF UCI CATEGORY, REGISTRATION, ATTENDANCE AND THE START LIST ARE DEFINITELY CLOSED.

● 30 MINUTES BEFORE THE START OF OTHER CATEGORIES, REGISTRATION, PRESENTATION AND START LIST ARE FINALLY CLOSED

TIME KEEPING: WOW TIMING (FULLY DIGITIZED) WWW.WOWTIMING.CZ

CSC COMMISSAIRE: DELEGATED BY ČSC

UCI COMMISSAIRE: AGNIESZKA KUNC - COMMISSAIRE INTERNATIONAL UCI

PHOTO/PRESS: - ACCREDITATION IN THE OFFICE OF THE PLANT

- ENTRY TO THE RACE TRACK IS NOT ALLOWED WITHOUT A VALID ACCREDITATION!



SCHEDULE:

FRIDAY, MAY 15

17:00 - 18:30 RACE OFFICE IN THE AREA

SATURDAY, MAY 16

07:30 - 16:30 RACE OFFICE IN THE AREA

9:00 BOYS AND GIRLS U13 (START IN BLOCKS)

10:00 BOYS AND GIRLS U15 (START IN BLOCKS)

11:00 BOYS U17 + MAN A,B,C - WITHOUT LICENS

12:00 - 12:59 OFFICIAL TRAINING ON THE XCO TRACK

12:00 VICTORY CEREMONY MORNING BLOCK

13:00 ELITE WOMEN + JUNIORS WOMEN + GIRLS U17

15:00 ELITE MEN

15:05 JUNIORS MEN

17:00 VICTORY CEREMONY

OFFICIAL TRAINING ON THE XCO COURSE WILL BE ALLOWED ACCORDING TO THE ORGANIZER'S INSTRUCTIONS ON THE DAY OF THE RACE.

START AND ANNOUNCEMENT TIMES ARE APPROXIMATE.

THE ORGANIZER RESERVES THE RIGHT TO ADJUST THE NUMBER OF LAPS AND THE TIME SCHEDULE ACCORDING TO THE CURRENT CONDITION OF THE COURSES AND THE NUMBER OF COMPETITORS REGISTERED FOR INDIVIDUAL CATEGORIES. IN CASE OF CHANGE, A COMMUNIQUÉ WILL BE ISSUED WELL IN ADVANCE. PLEASE FOLLOW THE AVAILABLE INFORMATION CHANNELS.

UCI CATEGORIES: THE 80% RULE WILL BE APPLIED.

OTHER CATEGORIES: THE RACE ENDS WITH THE CATEGORY WINNER CROSSING THE FINISH LINE, AFTER OVERTAKING ONE LAP, THE REMAINING LAPS ARE NOT COMPLETED.

STARTING NUMBERS ARE ASSIGNED ACCORDING TO ON-LINE REGISTRATION, THEN GRADUALLY ACCORDING TO PRESENCE BEFORE THE START. THE STARTING ORDER IS ACCORDING TO THE UCI RANKING

PARTICIPANTS UNDER 18 YEARS OF AGE START WITH THE WRITTEN CONSENT OF A LEGAL GUARDIAN AND ACCOMPANIED BY HIM!

ALL PARTICIPANTS ARE OBLIGED TO COMPLY WITH THE VALID UCI, CSC RULES.



CATEGORIES:

BOYS AND GIRLS U7 (2019-2021)

BOYS AND GIRLS U9 (2016-2018)

BOYS AND GIRLS U13 (2014 - 2015)

BOYS AND GIRLS U15 (2012 - 2013)

BOYS AND GIRLS U17 (2010 - 2011)

JUNIORS MEN AND WOMEN (2008 - 2009)

ELITE MEN AND WOMEN (2007 AND OLDER)

MAN A (1997 - 2007) - WITHOUT LICENS

MAN B (1987 - 1996) - WITHOUT LICENS

MAN C (1977 - 1986) - WITHOUT LICENS

MAN D (1967-1976) - WITHOUT LICENS

UCI POINTS AND PRIZES:

- **UCI POINTS - ACCORDING TO THE UCI SCHEDULE FOR THE CATEGORIES MEN ELITE, WOMEN ELITE, JUNIORS MEN, JUNIORS WOMEN**

ELITE M/ ELITE W UCI C2

RANK

UCI POINTS

1	2	3	4	5	6	7	8	9	10
30	20	15	12	10	8	6	4	2	1

JUNIOR M/ JUNIOR W UCI C2

RANK

UCI POINTS

1	2	3	4	5	6	7	8	9	10
20	18	16	14	12	10	8	6	4	2

- **UCI CATEGORIES ELITE MEN, ELITE WOMEN, JUNIORS MEN, JUNIORS WOMEN - FINANCIAL PRICES (IN CZK)**

MEN ELITE / WOMEN ELITE

1. PLACE - 5 000 CZK

2. PLACE - 4 000 CZK

3. PLACE - 3 000 CZK

4. PLACE - 2 500 CZK

5. PLACE - 2 000 CZK

6. place - 1 700 CZK

7. place - 1 500 CZK

8. place - 1 300 CZK

9. place - 1 100 CZK

10. place - 1 000 CZK

JUNIORS MEN / JUNIORS WOMEN

1. PLACE - 1 500 CZK

2. PLACE - 1 300 CZK

3. PLACE - 1 000 CZK

4. PLACE - 700 CZK

5. PLACE - 500 CZK

- **FOR ALL OTHER CATEGORIES OF IN-KIND PRICES**

- **ANNOUNCEMENT - TOP 5 FROM EACH CATEGORY**



TRACK:

THE COURSE OF THE ELITE CATEGORY CONSISTS MAINLY OF FOREST ROADS AND TRAILS IN THE VICINITY OF THE MOUNTAINBIKE AREA.

THERE ARE ALSO SEVERAL TECHNICAL SECTIONS AND A ROCK GARDEN.

THE THE START AND FINISH OF THE COURSE ARE IN THE MEADOW BELOW THE SKI SLOPE IN THE COMPLEX.

COURSE FOR CHILDREN'S CATEGORIES ARE THEN MODIFIED/SHORTENED TO SUIT THE INDIVIDUAL CATEGORIES IN TERMS OF LENGTH AND TECHNICAL DIFFICULTY.

BOYS AND GIRLS U7+U9 500 M

M BOYS AND GIRLS U11 2000 M

M BOYS AND GIRLS U13+U15 2500 M

M BOYS AND GIRLS U17

AND OLDER 4000 M

NUMBER OF LAPS:

ALL RACES ARE HELD IN ACCORDANCE WITH UCI REGULATIONS.

THE FINAL NUMBER OF LAPS IS DETERMINED BY THE COMMISSAIRE AFTER THE COURSE CHECK, TAKING INTO ACCOUNT THE DIFFICULTY OF THE COURSE, WEATHER CONDITIONS AND EXPECTED RACE TIME.



PARKING:

FOR PUBLIC:

● ***PARKING LOT IN THE AREA***
GPS: 50.0678481N, 16.4371350E

FOR TEAMS:

- ***IN THE TEAM AREA - SEE THE MAP***
- ***MARKED ZONES***
- ***PRICE ACCORDING TO THE SCHEDULE BELOW***
- ***RESERVATION OF A SPACE ACCORDING TO A PROPERLY COMPLETED PARKING RESERVATION FORM***
- ***PAYMENT IN CASH ON SITE***
- ***RESERVATION IS POSSIBLE UNTIL FRIDAY 6 JUNE 2025***

TEAM PARKING:

IN CLOSE PROXIMITY TO THE SITE - IT WILL BE DIVIDED INTO PARKING ZONES.

BASIC TEAM STALL WITH A SIZE OF 50 M2.

A MAP PREVIEW IS ALSO AVAILABLE HERE.

BIKE WASH:

- ***WASHING CENTER ON THE PREMISES***
- ***BOXES WITH CLEANERS + VACUUM CLEANERS***

ARRIVAL AT THE RACE:

YOU CAN REACH THE RACE TRACK BY TAKING ROAD 312 TO THE VILLAGE OF DLOUHOŇOVICE AND CONTINUING "TO POD VLEKEM 162" - THERE WILL BE NAVIGATION ARROWS IN DLOUHOŇOVICE.



ACCOMMODATIONS:

1) CHALUPA U FRANTIŠKA (10 KM)
KLÁŠTEREC NAD ORLICÍ 21, KLÁŠTEREC NAD ORLICÍ 561 82
PHONE: +420 773 690 213, E-MAIL: TADA.DOLEZAL@SEZNAM.CZ
WWW.CHALUPAUFRANTISKA.CZ

2) HOTEL PANSKÝ DŮM (3 KM)
MASARYKOVO NÁMĚSTÍ 6, 564 01 ŽAMBERK
PHONE: +420 724 078 959, E-MAIL: PANSKYDUM@HOTELZAMBERK.CZ
WWW.HOTELZAMBERK.CZ

3) CHALUPA NA KOPCI ZÁCHLUMÍ (8 KM)
ZÁCHLUMÍ 27, 561 86
PHONE: +420 732 205 408

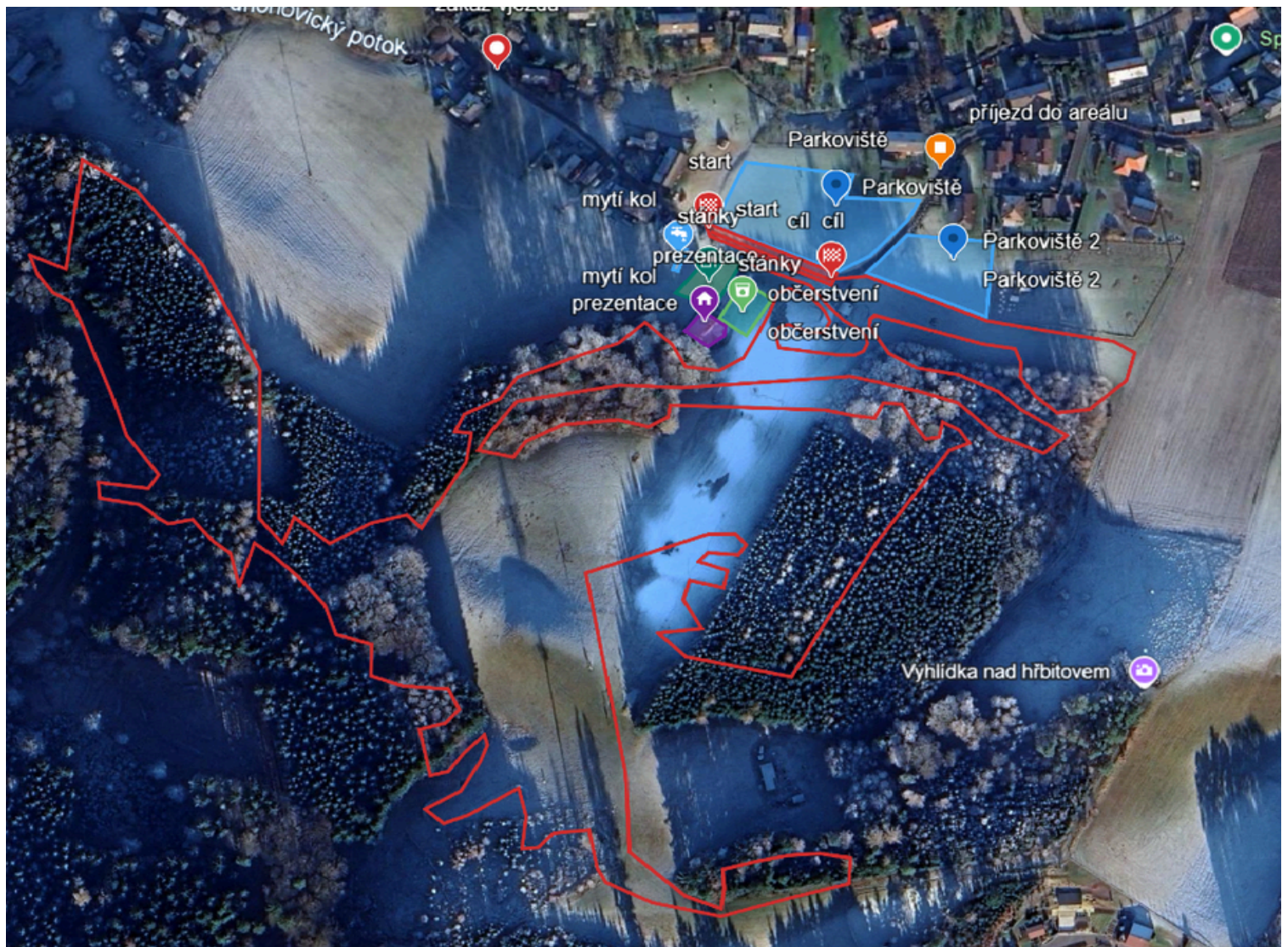
4) DŮM POD RADNICÍ (3 KM)
ŽAMBERK, POD RADNICÍ 162
PHONE: +420 222 532 547
WWW.HOSPUDKA-A-PENZION-IMRVERE.PENZION.CZ

7) HAŠTRMANŮV MLÝN (6 KM)
LÍŠNICE 133, 564 84 LÍŠNICE
PHONE: +420 731 539 280, E-MAIL: INFO@HAŠTRMANUVMLYN.CZ
WWW.HAŠTRMANUVMLYN.CZ

8) UBYTOVÁNÍ NA STATKU (6 KM)
HELVIKOVICE 49, 56401 ŽAMBERK
PHONE: +420 737 717 897, E-MAIL: OUHELVIKOVICE@ORLICKO.CZ



MAP



[HTTPS://EARTH.GOOGLE.COM/EARTH/D/11-LXIPMM-YJ8A9HLJJPMMBSIMIP6WGIN?USP=SHARING](https://earth.google.com/earth/d/11-LXIPMM-YJ8A9HLJJPMMBSIMIP6WGIN?USP=SHARING)

